

U P P E R
S A C O
V A L L E Y
L A N D
T R U S T



Preserving Land for Community Benefit

PO Box 2233, Conway NH 03818
(603) 662-0008 • info@usvt.org • www.usvt.org

ANNUAL REPORT
2019



PRESIDENT & EXECUTIVE DIRECTOR'S MESSAGE

Preserving Land for Community Benefit

The Upper Saco Valley Land Trust is a nonprofit organization working with local landowners to permanently protect the lands and waters that define our communities and enrich our quality of life.

USVLT serves northern Carroll County in New Hampshire and western Oxford County in Maine.



This fall, USVLT will turn 20. With the approach of this milestone, we are taking stock of the work accomplished in the past 19 years. USVLT has now permanently conserved more than 12,000 acres of habitat, working forest, and prime farmland throughout the Mount Washington Valley of New

Hampshire and western Maine. As a watershed-based organization, we've also worked to safeguard drinking water aquifers and protected more than 16 miles of frontage along the Saco River and its tributaries. This track record is a remarkable success story: one of dedication and generosity on the part of countless landowners and supporters, all coalescing around a shared vision of the future.

On the cusp of our 20th birthday, we have reached out to several early land and conservation easement donors, original board members, and other community leaders who shared that bold and optimistic vision. Their reflections appear on pages 4 to 5.

Powerful partnerships with other area nonprofits defined 2019 as well. The new Redstone Preserve (see page 9 for more information) provides partnership opportunities with the Town of Conway, The Nature Conservancy, and also potentially, in a first for USVLT, with Habitat for Humanity. In conjunction with Tin Mountain Conservation Center, we continued our Easement Exploration Series, designed to connect supporters and community members with the lands that they have helped protect (see page 7). With the World Fellowship Center, we completed all fundraising necessary to conserve more than 400 acres of their campus.

2019 was also a year of planning for future land conservation initiatives. We are currently working on several projects throughout our 11-town service area that will cumulatively preserve more than 1500 acres of forests, prime agricultural soils, and lands protecting essential water resources. Thank you for your part in making this story complete, and for sharing our vision.

William Abbott, Executive Director Doug Burnell, President

BOARD OF DIRECTORS

- Doug Burnell, Conway
President
- Mark Dindorf, Hart's Location
Vice President
- Jim Hastings, Glen
Treasurer
- Rick Jenkinson, Kearsarge
Secretary
- Ann Bennett, Jackson
- Peter Benson, Jackson
- Greg Cooper, Madison
- Alex Drummond, East Conway
- Tom Gross, South Conway
- Rebecca McReynolds, Conway
- Anne Pillion, Intervale
- Burgess Smith, Brownfield
- Dan Stepanauskas, Madison

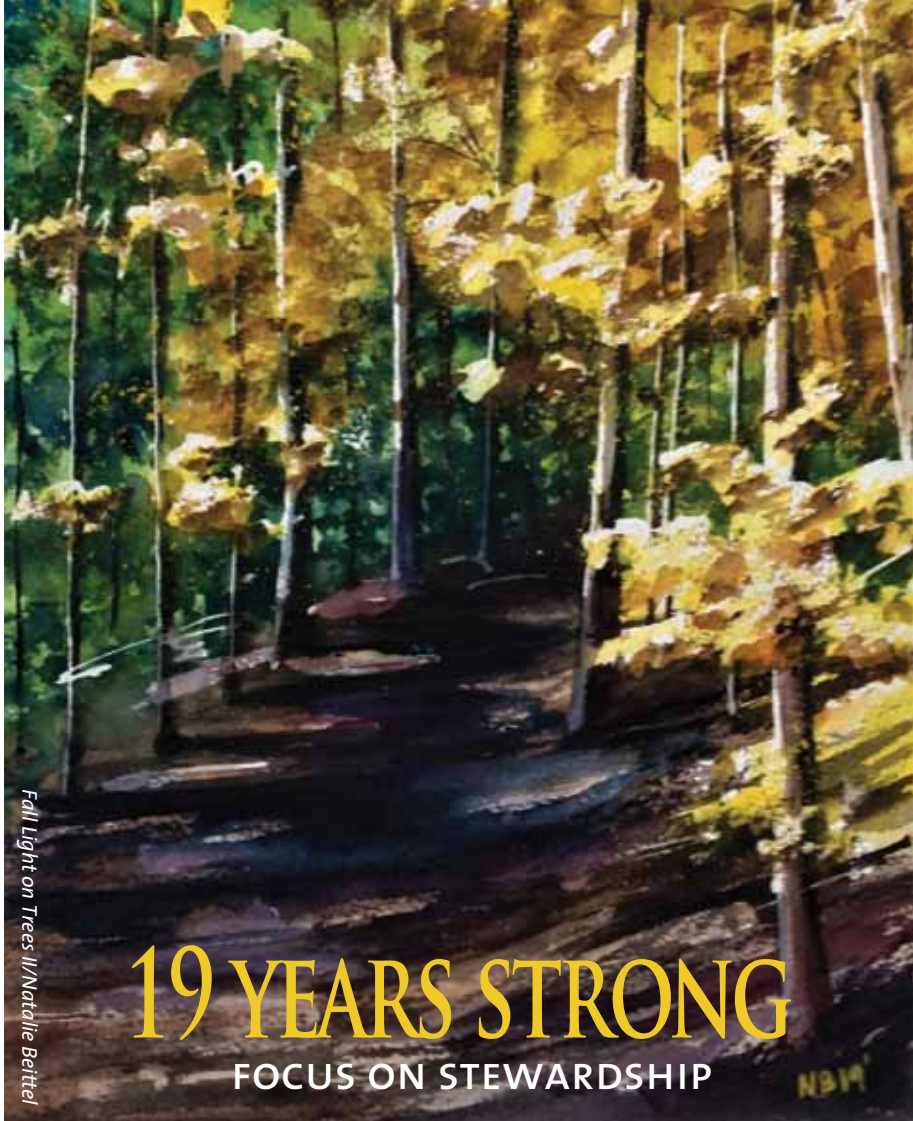


Art Celebrates Place is a cornerstone of our conservation community. 2019 marked the ten-year anniversary of this annual event and springtime rite. To celebrate, all images in this annual report showcase artwork of the past few years. We deeply appreciate the generosity of the contributing artists.

STAFF

- William Abbott
Executive Director
- Peter Howe
Land Steward
- Abby King
Conservation Lands Manager
- Aimee St.Germain
Outreach & Office Manager
- Jesse Wright
Local Food Systems Advocate

Cover: Autumn Evening in Jackson/Lauren Sansarica
This page: View Across the Back Field/April Costa



Fall Light on Trees //Natalie Bettel

19 YEARS STRONG

FOCUS ON STEWARDSHIP

In 19 years, we've helped to preserve 12,000 acres, which is a lot of land to care for. A key element of our mission is to assure we have land “remaining in its natural state, benefiting natural and human communities,” inferring management involving an intentional “light touch” with infrequent visits. But USVLT’s mission statement also provides for the “well-being and availability of land for farming, forestry, recreation, and education.” It is these multi-use properties that necessitate a proverbial rolling up of sleeves. Whether working with lessee farmers at the Albany Town Forest’s fields behind Kennett Middle School, or developing interpretive signage that highlights the fascinating human history at the Leita Monroe Lucas Preserve in East Conway, USVLT is committed to these lands. They provide rich natural resources and educational opportunities, and are a worthy investment of our time, money and materials.

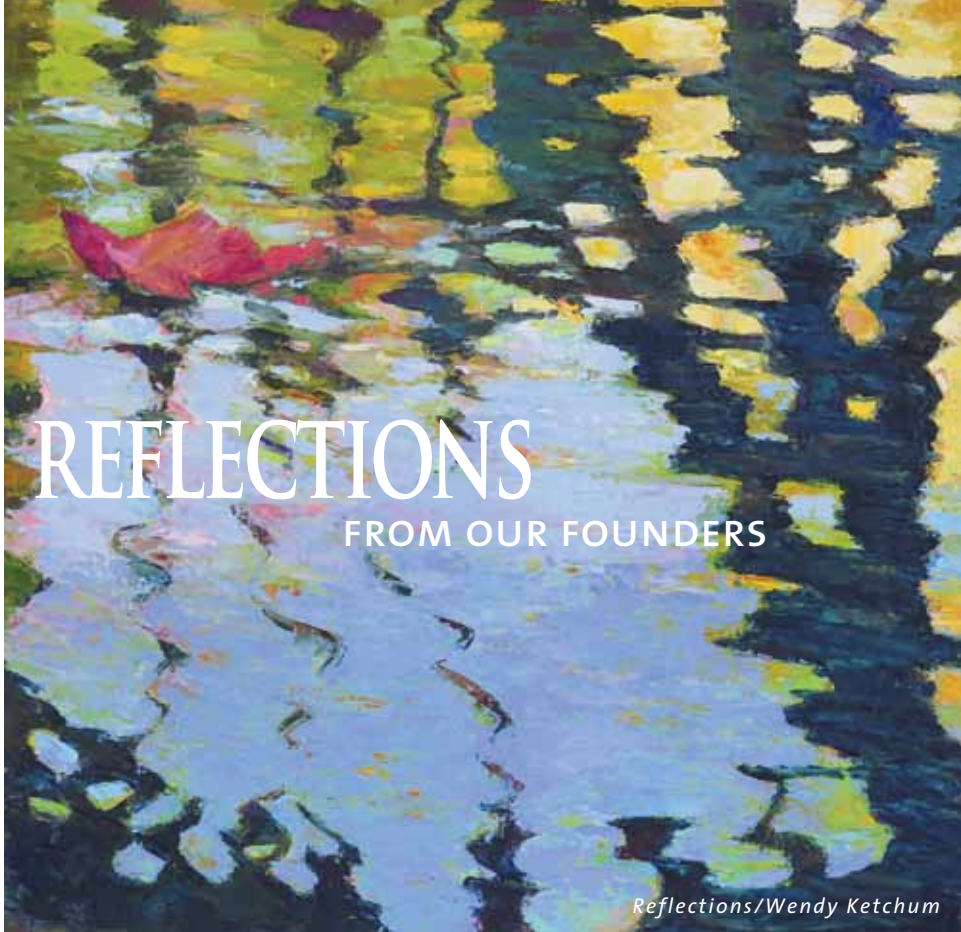
In 2019, USVLT established a Land Steward position to meet these opportunities head-on. Peter Howe (who was also our summer intern in 2018) accepted the job and hit the ground running in June. Throughout the summer, he worked with the Conservation Lands Manager to implement a transition of stewardship responsibilities. During the fall, Peter led the volunteer easement-monitoring program, all while planning for improvements at our “fee-owned” preserves, applying for funding for new trails, and wholly dedicating himself to upgrading Land Trust maps and signage.

Several USVLT properties are poised to demand an outsized portion of stewardship time and dollars, and they should. Chief among these is the Pine Hill Community Forest. (The Redstone Preserve, donated in 2019 by John Schiavi, also has a rich future—see page 9 for details.) With its network of trails, proximity to Kennett High School, and existing stakeholders including the Mount Washington Valley Trails Commission and the Mountain Meadow Riders snowmobile club, continuing the tradition of multiple use is essential.

In 2019, the Pine Hill Advisory Committee officially formed and started a collaborative planning process for the Community Forest. Comprised of representatives from Tin Mountain Conservation Center; the Conway School District, Conservation Commission, and Select Board; and the Land Trust, the committee serves as a voice for a wide constituency. In early 2019, it hired Recon Trail Design, and in the fall approved the conceptual trail master plan, which includes linkages to the Conway Rec Path, space for enhanced mountain biking trails, and better interface with the Kennett High School campus. USVLT staff has applied for funding to start turning these conceptual designs into reality. Stay tuned!



Pine Hill Pileated Woodpecker/Deb Ayers



REFLECTIONS

FROM OUR FOUNDERS

Reflections/Wendy Ketchum

With the approach of our 20th anniversary, we asked several early supporters and volunteers to reflect on USVLT's collective work to preserve land for community benefit. Their thoughts are captured here. Please note that this group is just a small subset of the many community members that helped launch USVLT in late 2000; we remain indebted and thankful for every one of those early visionaries.

I grew up in a rural community, which is now a suburban housing development. That experience reinforced for me the need for land preservation. It hurts to see these special places disappear. I both live and work on protected land which is appreciated and used by many. From chestnut trees, to ski trails, deep forests to undeveloped lakes, we have the Upper Saco Valley Land Trust to thank for encouraging many to protect and preserve land for the betterment of all.

—Lori Jean Kinsey, Executive Director, Tin Mountain Conservation Center, and current owner of the Harding Easement

I am proud to be one of the original founding members of USVLT and grateful for the opportunity to work for the Land Trust for many years as its Land Protection Specialist. It was my dream job. With the continued generous

support of our members and community foundations as well as the dedication of our Board of Directors, staff and volunteers, I see a bright future ahead for USVLT and local land conservation.

—Linda Comeau, founding Board member and long-time USVLT Land Protection Specialist

In 2007, Linda Comeau's expertise in guiding my husband, Farish, and me in our conservation easement process was instrumental in our overwhelming support for the mission of USVLT. We soon were involved with the new director, William Abbott, and found ourselves members of an extended family of like-minded conservation folk who met for the annual meetings and Art Celebrates Place; both events involving our Uplands Apple Farm at several points. At the time of my husband's death, it was the knowledge that, together, we had already made sure that our land would be protected into the future that brought comfort.

—Eleanor Jenkins, USVLT member, early conservation easement donor, and owner, Uplands Apple Farm

Being one of the early members of the Board of Directors of this organization, and then serving on the land and development committees (and even leading a few canoe trips on the Saco), my involvement with USVLT has been very fulfilling. Through my position at NRCS, I have partnered with USVLT to secure farmland easements and encouraged landowners to donate easements and fee parcels. I think it is a very impressive organization that has grown tremendously, thanks to many people working together in harmony to make the world better.

—Nels Liljedahl, former Board member and Natural Resources Conservation Service District Conservationist

When I think back on my twenty-year relationship with the Upper Saco Valley Land Trust, with all of its great land protection work, growth and vision, what really strikes me is the quality of the people. Throughout the years, the board members, volunteers, staff, donors, land owners and other supporters all have shared a common vision and dedication to land conservation and protecting our special places for the future, and it does not get much better than that.

—Peter Benson, founding member and current USVLT Board member

The Land Trust was incredibly fortunate to have experienced volunteer board members from the outset. Tom Henderson, a Land Trust charter member, was also executive director of the Greater Lovell Land Trust. Another charter member, Linda Comeau, was fresh from a graduate degree in Natural Resource Management from Antioch New England. Peter Benson and Wink Lees, early Land Trust Board members, were working with the NH Nature Conservancy, and Linda Gray was a staff person for the NH Charitable Foundation. Their combined experience, together with a very keen local Board, was one of the Land Trust's major early successes.

—Tom Earle, USVLT long-time Board President, early easement donor, and owner, Earle Family Farm



Red Pine Tree/Mabel Albert

EVENTS & OUTREACH

Much of USVLT's work is opaque, time-consuming, and hard to translate. Negotiating easement terms, combing through title reports, and writing grants can tend towards the mundane. For our staff and dedicated volunteer Board of Directors, these quotidian tasks can feel far removed from the land we love, which is a key reason that outreach programming and events are so essential. These activities reinforce our mission of conserving land for community benefit and connect us directly to our committed supporters.

Now in its seventh year, USVLT's Easement Exploration Series is designed to introduce the land we've helped conserve, both far-flung and close-at-hand. The Series features a wide array of landscapes and educational topics. In 2019, that included a tour of historical ski trails at the Ware Preserve in Intervale, an astronomical star-gazing event at World Fellowship Center, an exploration of fire ecology at the King-Hayes easement in Brownfield (complete with finding charcoal, burn scars, and other traces of Brownfield's devastating 1947 fire), and an "Impressions of Painters" history walk at the Leita Monroe Lucas preserve in East Conway, celebrating the legacy of two American Impressionists that once lived onsite, Thomas Wilmer Dewing and Maria Oakey Dewing.

2019 marked the 10th anniversary of Art Celebrates Place. Once again, the Pace Galleries and Leura Hill Eastman Performing Arts Center at Fryeburg Academy showcased local visual artists, dancers, singer-songwriters, and story tellers. This annual rite of spring, with its stellar display of talent, was the most successful, financially, in our history. We owe tremendous gratitude to the volunteers that drive this event, year after year, and also to those pioneers who first envisioned ACP and its potential impact: Marnie Cobbs, Linda Gray and Lucy Gatchell.

As Art Celebrates Place so perfectly celebrates spring's arrival, Fields on the Saco is the other seasonal bookend, marking the fall harvest. In 2019, the Land Trust hosted the event for the third year, and once again, the Valley's finest chefs and farms were on display at the Hardy Farm in Fryeburg. With a special focus on the farmers who have been directly helped by USVLT's land-conservation efforts, last year's fundraising goal was handily surpassed. We are extremely grateful to Sasha Tracy, who voluntarily shepherded this event from start to finish with grace.

If you haven't been, we'd love to see you at future events. They're the best way to get to know what we really do, and why we do it.



River Rocks/Natalie Beittel



The Hug/Gay Freeborn

PARTNERSHIPS & SPECIAL INITIATIVES

It takes a village. Partnerships amplify the Land Trust's work, and chief among our partners are other environmental organizations that both conserve land and focus on education. Many Easement Exploration Series events, for example, partner with Tin Mountain Conservation Center (see page 6-7 for 2019 highlights). The Ware Preserve (a 2018 project) is stewarded with the help of Granite Backcountry Alliance. Community partners are planning the future of Pine Hill Community Forest (see page 2-3 for more), while other current land-protection projects will be completed only through the support of local and regional stakeholders, like The Nature Conservancy and The Trust for Public Land.

In 2019, a new partnership was seeded with Habitat for Humanity. As a land conservation organization, USVLT recognizes that it cannot work in a vacuum, isolated from other community issues. Critical among those concerns is the lack of affordable housing within our service area. In 2019, we received a donation of property from John Schiavi, the Redstone Preserve, which abuts historic Redstone Village (see box). While most of the land boasts excellent conservation values and natural resources, or provides a buffer to similar areas, some of it does not. A dialogue is underway with the local chapter of Habitat for Humanity to explore whether a portion of the property is appropriate as a future site for affordable housing. While this relationship is in its initial stages, the Land Trust embraces the possibility of preserving land for community benefit in a new—and potentially profound—way.

Get to Know the Redstone Preserve

In August of 2019, USVLT received a three-parcel donation of 94 acres near historic Redstone Village from John Schiavi (Redstone Properties). The property has a history of multiple uses by bikers, hikers, neighborhood dog-walkers and snowmobilers (Corridor 19 crosses it). The land also abuts The Nature Conservancy's Green Hills Preserve, so permanent ownership by USVLT only made sense. The property is considered "Supporting Landscape" for the rare natural communities just upslope, and it includes portions of the historic Redstone Quarry. The donation also came with a generous stewardship-fund contribution toward the property's long-term management. Public access, historic assets, and natural resources make this property a true conservation gem, checking all the proverbial boxes. USVLT will partner with other area nonprofit groups for the parcel's ongoing management, to continue responsible public access onsite, and to shine a light on Redstone's fascinating history.

To access this preserve, park in the dirt lot behind Walmart at the end of Hemlock Lane, and then cross the railroad tracks. The Redstone Preserve is immediately east of Mountain Street and heads uphill toward Rattlesnake Mountain.

The Land Trust is also proud of its role in helping to create a new community nonprofit, the Saco Headwaters Alliance. Since 2015, USVLT has been increasingly concerned about both surface and groundwater quality. While traditional land conservation does address these issues (there is a direct correlation between water quality and the percentage of the watershed that remains forested), clearly there was a need to accelerate efforts to safeguard this critical resource. To this end, several area towns have adopted, or are in the process of adopting, aquifer protection ordinances, thanks to USVLT's outreach. Protecting water resources is complex and time intensive, and the need emerged for an organization to take this on as a core mission. Land Trust Board members Tom Gross, Anne Pillion, and Mark Dindorf (as well as several USVLT advocates) have now created the Saco Headwaters Alliance to make headway on this critical work. We look forward to future partnerships with SHA.



Sheep in the Barn/Read Baldwin

DONORS & SUPPORTERS

Landowner contributor = L
Easement monitor = M
Volunteer = V

(Donations received 11/1/18 – 12/31/19)

MEMBERS/FAMILIES

Duncan & Meredith Abbott
David Paige & William Abbott M
Access Fund
Mr. Rob Adair
Ingrid & Mark Albee
Tom & Karen Albert
Linda Comeau & Allan Aldrich C M
Albert Alex
Alkalay & Smillie, PLLC
Huntley & Joyce Allan
Ms. Susan Allen
Anna Allocco
Maxine Andrews
Roy Andrews L
Anonymous (33)
Jim Ansara L
Beth McGuerty & Anne Arbuthnot
The Arena Family
Doug & Candy Armstrong
Guli & Sara Arshad
Trish & Glenn Ashworth
At Home Real Estate
Penelope & Henry Aubin L
Audubon Society of New Hampshire
Autumn Nomad
Barbara Axten
James Babson
Lyn Norris-Baker & Frank Baker
Lori & Frank Balantic M
Christopher Baldwin
Frances & Stuart Baldwin L
Wendy MacLeod & Read Baldwin
William Ballou
F. Michael Bannon
John Barley
Ted & Ingrid Barrett L
Ronald Batchelder
Lisa Baughn

Julie Lanoie & Andy Bechtold
Mr. William Beck, Jr. M
Martin Beilin
Frank Benesh
Ann & Richard Bennett V
Laura Benson
Peter & Emily Benson V
Ed & Kathleen Bergeron
Theresa Bernhardt
Mary Bernstein
Conleth Berry
Joe Berry
Gina Bilander
Ms. Cheryl Bildner
Craig Billie
Ed & Karyl Bisson
Jennie Blair
Linda & Steve Blais
Robin & Rick Blank
Russell & Ruth Boisvert
Candis & Scott Bolden
Eleanor & John Border
Marianne Borowski
Paul & Denise Bourget
Matthew Neville & Rosemary Bourguet
Lori Tradewell & Robert Bowman
Rick & Pennie Boyle
Henry Lie & Lucy Boynton L
Andres Braendli
Deidre Braun
David Breeden
Phyllis Breeden
Kate Briand
Mary Ann Briggs L
William & Jean Briggs L
Barbara Broemme
Ms. Wendy Lees Broker
Allen & Joanne Brooks
Brooks Family Trust
Sarah Brooks
Will Broussard
Charlotte Brown
Christopher & Barbara Brown
Elizabeth Brown
Ernest O. Brown

Richard Brown
Joan P. Cope & Russell M. Brown L
Andy Buck
Annie Budiselich L
Mr. Rob Burbank
Doug & Kathy Burnell V L
Jon & Anita Burroughs
Dr. & Mrs. Howard Burt L
Richard & Lanie Buskin
Renee & John Butler
Ailie Byers V
Kevin Callahan
Laurie Campanelli
Jim Torpey & Marsha Carlin
Ms. Jane Carlson
Sandra & Larry Carr
Gerry & Del Carrier
Mr. Leon Carson
Theresa & John Cederholm
Ms. Lee Ann Chace
Anne Pillion & Hadley Champlin V M
David & Nina Chandler
Martha W. Chandler
Jeanne Chanley
Helen Chapell
Randy & Ellen Chapman
Ms. Jess Charpentier
Ronald Zager & Anne Chase
David Chilinski
A. Michael Choremi, Jr.
Alec Choremi
W. Robert Abbot & Claire M. Cifaloglio
Robin Clark
Bill & Joan Clarke
George & Aila Clausen
Mrs. Martha Cobbs L
Dennis Sullivan & Marnie Cobbs V M L
Jeffrey Cohen
Lora Colten
Jean & Paul Conley
Ms. Phyllis Connolly
Conway Lake Conservation Association L
Ms. Carol S. Coonrod

**USVLT sincerely thanks all of its 2019 contributors.
We couldn't do it without you!**

Charlotte & Herb Cooper
Greg Cooper V
Mark Vaughan & Sandra Cordes-Vaughan
Cormack Construction
Brian Otis & Donna Cormier
April Costa M
Ms. Christine Costello M
Country Ecology
Diane & Mike Covino
Nick Lloyd & Megan Craig
Peter Crane
Cranmore Mountain Resort L
Ms. Janice Crawford
Mr. Rowland Creitz
Laura & Neil Cronin
Ralph Cronin
Geoffrey Cummings
Laura Cummings
Dana Cunningham
Colleen Curran L
Lucy Claire Curran L
Denis & Cathy Currier
Tara Taylor & T.O. Currier
Mr. Kenneth Cymbal
Rachel Andrews Damon
Mr. Mike Dana
Robert & Priscilla Dannies L
Rick & Jane Davidson
Jacob & Sarah Davis
Peter & Linda Davis
Jess & Andy Dean
Thomas & Dorcas Deans L
Charles Dethier
Don & Pam Devine
D.F. & P. S. Dick
Richard & Barbara Dickersin
Alex Dickinson L
Vinette DiGregorio
Elizabeth DiLando
Mr. George H. Diller
Nancy Ritger & Mark Dindorf V
Trish Mansur & Elaine DiRusso
Brian & Ann Diskin
Helen & Bruce Dixon
Mr. Richard Dole
Larry & Cathy Donoghue
Dennis J. Doucet
Christopher & Antigone Doucette

James & Harvest Doucette V M
Barbara & David Douglass
Dave & Noreen Downs
Linda & Hank Dresch
Jo-Ann Driscoll
Jim & Jeannie Drummond
Mona Pinette & Brendan DuBois
Roland & Bette Dubois
Deborah Duncanson
Ms. Maryanne Dunfey
Ms. Deb Dunn
Mr. Mark Dunn
Mr. Philip Dunphy
Miriam Nelson & Kinloch Earle L
Mr. & Mrs. R. B. Earle, Jr. L
Tom & Ruth Earle V L
Ecosystem Management Consultants of New England
Peter Edwards
Ms. Elizabeth Ehrenfeld
Audrie Eldridge
Robert & Michelle Ellinwood
Scott & Susan Ellison
Birdy Ellsmore
Helen Cafferty & Otto Emersleben
Emily Lord Photography
Rebecca McReynolds & Maureen Enos V
Gail Erickson
Glen & Jeanette Eskedal
Karen & Boyd Estabrook
Arlene Evanish
Leslie Linson & Howard Fain
Macomber Family
Mike & Cindi Fanning
Deborah Fauver, Esq. V
Suzanne & C. Anthony Federer
Margaret & Charles Felton
Betty & Tino Fernandes
Gail Ferreira
Fisher Family L
Barbara Hayden Fitts L
Joseph & Karen Fitzpatrick
Jeffrey Fleischer
Ms. Jill Flint-Barber
Frederick & Mary Forbes
Forest Land Improvement
Roderick Forsman
Mary Jane Forte
Anne & Arthur Foster
Nicholas Foster L
Brian & Betsy Fowler
Judith Fowler
Brian Fox
Susan Fox
Karen Franke
Fraser Electric
Soffia B. & Peter H. Fraser
Mardi Freeman
Carmine & Maryellen Frele
William & Daune Frey
Lauren Frye
James Gallagher
Scott & Kim Gardiner
Jacqueline & Meikle Gardner
Mr. Larry Garland M
Leane Page Garland
Marc Garland
Elizabeth Lee & Peter Garland
Gaudette Family
Ginny Nossiff & Brad Gaudreault
Tina Gebhard
Don & Betsy Gemmecke
Thomas Gerson L
Jen Forsythe & Ryan Gibbs
James & Sarah Gibson
Thomas Gill
Scott & Barbara Gleason
Ed Good
Jean Goodine
Rev. Emily C. Goodnow
Ms. Ellie Gordon
Dave & Carol Gorke
Tom & Janet Gorman
Linda Gray & David Gotjen V
Barbara Drake & John Gotjen
Frank Gould & Abbi Fisher Gould L
Mr. H. Thorne Gould
Kevin Bennett & Leigh Grady
Ms. Susan Graesser
Granite Backcountry Alliance
JJ & Joanne Green
Elizabeth Cobbs & Philip Green L

Landowner contributor = L
Easement monitor = M
Volunteer = V

MEMBERS *(continued)*

Paula Brown & David Greenslit
John & Rosemary Gribbin
Kit & Bob Griffin **M**
Linda Gritz
Tom & Maria Gross **V L**
Deborah Gurn
Peter & Barbara Haack
Elizabeth Hager
Chris Chapman & Alison Hale
Wil & Don Hall
Susannah Halpern
Elizabeth Hamlin
Charles & Maureen Hanlon
Katharine Hanson
Sam & Betsey Harding **L**
Lucy Gatchell & Dexter Harding **V M**
Mickey Hardt

Susan Hardt
Mark Koyama & Cary Hardwick
Leah Hart
Deb & Greg Hastings **L**
Jim & Linda Hastings **V**
Peter & Stefi Reed Hastings
Elaine Hatch **L**
Lois Hatch
Sara Hatch
Mr. Doug Haver **M**
Carroll Hayes
Mr. Ken King & Ms. Olga Hayes **L**
Norman & Kathleen Head
Mr. Ross Heald
Bob & Pat Heiges
Mr. Geoff Heigh
Carolyn Hemstedt
Ms. Dorothy Hender
Colleen Henderson
Sharrene Henderson
Thomas & Emily Henriksen **L**
Hepburn, LTD.
Bridget Herlihy

Richard Hesslein
Richard & Beverly Heydinger
Pat & John Higgins
Arliss Hill
George & Helene Hill
Jim Hill
Doug Hjelmstad
Jean & James Hodgins
John & Patricia Hoffman
Matt & Jen Hohenboken
Ms. Lisa Holcomb **M**
Edward Hollum
Valerie & Berthold Horn **M**
Milt & Carla Horowitz
Harrison & Barbara Hoyt
Julie Hoyt
Greg & Jenny Huang-Dale
Margery Huemmler
Priscilla & Franklin Hundley
Max Hurgin
Helen & Sparky Hurgin
Mr. Robert Hurst & Cheryl M. Hurst
Justin & Julie Hussey **L**

Scott Hutchins **M**
Lois Burleigh & William Hutchins
Jamie Riel & Caren Hutchinson **M**
Ned & Linda Iselin
Jackson Art Studio
Carolyn Jackson
Helen Jackson
Mrs. Eleanor Jenkins **L**
Pamela Jenkinson
Rick & Vickie Jenkinson **V**
Jewish Federation of Cleveland
– The Richard & Margaret Margolis Philanthropic Fund
Glenda Davis & Pam Jezukawicz
Joan E. MacPhail Rev Trust of 2008
Chris Joosen & Jana Johnson
Diane Johnson
Lindsay Johnston **V**
Paula Jones
Ms. Theresa Jones
Moya & Lindsey Joosten

Steve & Lindsay Kafka **V**
Mary & Steve Kandrotas
Anne & Bob Kantack
Mr. Jack Karp
Stan & Martha Kaubris
John & Cheryl Keator
Mark Ruckstuhl & Sharon Keeler
Ms. Joan Kelley
Edward & Patricia Kelly
Pete Lewis & Joanne Kelly
Marian A. Kelner
Judy & Dan Kennedy
Mr. Bruce Kennett **L**
Peter & Joanne Kennett **L**
Bayard & Theresa Kennett
Daryl Kent
Norman Cloutier & Wendy Ketchum
Kenneth & Sarah Kimball
Abby King
Kitty King
Nick King

Lori Jean Kinsey
Genie Tracy Kirchner
Elizabeth Klebe
Peter & Elaine Klose
Ms. Faith Knowles
Lynne Knox (Luciano)
Steve & Sara Knox
Erik Koeppel
Robert Koppe
Ernesta & Mark Kraczkiewicz
Andy & Heather Kramp
Richard & Sandy Krasker
Robert W. Kruszyna
Mr. James Kuhn
Laurie LaMountain **V**
Walter & Debi Lancaster
Russ & Joan Lanoie
Cornelia Lanou
Harry & Patricia Lapham
Rich & Julie Laracy
Michael & Victoria Laracy
Tricia Mattox-Larson & Steve Larson **V M**



Landowner contributor = L
Easement monitor = M
Volunteer = V

MEMBERS *(continued)*

Jeff & Susan Lathrop V M
Bob & Lyn Lauben
Robert & Susan Laufer M
Susannah Stuart & Russell Lavallee
Fred & Teri Leach
The Lee Family
Mr. Wendell Lees M
Ruth Hamilton & Joe Lentini
Kirk & Judy Leoni
Julie Levine V
Tobey Levine
Mr. Gardner Lewis
Barbara & John Lichtman
J.D. & Lisa Lichtman
Nels Liljedahl
Karl & Marie Limmer
Deborah & Gregory Link
Thomas K. & Sandra H. Liversidge
Lewis & Rosemary Lloyd
Myrna Lloyd
Karen Lombard
Ms. Janice Lord
Elizabeth Loughran
Emily Lubanko
Mr. Barrett Lucas L
Mr. A.O. Lucy L
Caleb Lucy
Daniel Lucy L
Nat & Marianne Lucy L
Sam Lucy Family L
Gary & Karen MacDonald
Earle & Sarah MacGillivray
Charles & Robin Macomber
Kimberly Siebert & Mr. Hugh MacPhail
Kevin & Polly Mahoney
Mr. George Mair
Rose Hache & Dean Malouta
Aida Manduley
Candy & Tom Manero
Linda Manning
Nate & Amanda Manning
Sarah K. Manrique
Frances Marcuse
Richard & Margaret Margolis L
Tracy Marnich

Jon & Diane Marquis
Scott & Barbara Marr
Margaret & Sut Marshall
David & Jeanne Mason
Elaine Stockbridge & Andrea Masters
Jeff & Traci Masterson L
David & Helene Matesky
Peter Gurnis & Erin Mayo
Joe & Daryl Mazzaglia
McAdams Charitable Foundation, Mr. & Mrs. Norman E. McCulloch, Jr., Trustees
Amelia McCarthy
Susan & William McCarthy
Mr. & Mrs. Norman E. McCulloch, Jr. L
Kristen & David McDermott M
Cam Ferrante & Elizabeth McGrath L
Joel Horn & Susan McGrath L
Chris McKay
BrennaMae Thomas-Googins & Brandon McKenney
Virginia Ward & Brad McKenzie
Kenneth & Linda McKenzie
Dennis & Elizabeth McKinnon
Paul & Margaret McManus
Nancy Wottrich & Bruce McNaught
Mr. William McPherson III
McSherry's Nursery
Whitney Abbott & Murray McTigue
Anne Mears
Merryweather Family
Ben & Martha Miller
Michele Miller
Christopher & Catherine Milton
Sally McMurdo & Peter Minnich
Henry Mock
Charles Monroe
Meghan Moody V
Mr. Alan Moore
Mr. Stephen Moore
Kit & Suzanne Morgan
Marie Morgan L
Tim & Donna Morgan
Julie Brown & Zachary Morowitz L
Maria Morrison

Mount Washington Valley Chamber of Commerce
Mountain Top Music Center
Dave & Meg Murphy M
Kathleen Murphy
Patricia Murphy
Jim & Susan Nacchia
Robin & Robert Najar
David Nathan
Dr. Deborah Nelson
Winston Montgomery & Peggy Nelson
Pete Nelson
NEMBA
Ed & Melody Nestor
Jim Gore & Sue Nichols V L
Charlie & Donna Nichols
Mr. Charles Nims
Charlene & Thomas O'Brien
Ms. Alicia Ogawa
Hank Prensly & Susan Ogden
Priscilla Ortiz
Mr. A. Neill Osgood II L
Phil & Ann Ostroski M
Pamela Packard L
Michael Pahl
John & Lee K. Paige L
Gail Paine
Cathryn Pallon
Stephen Fink & Maria Palmisano
Gustav Papanek L
Diana Parker L
Jill Parker L
James & Mallory Parkington
Maxine Paul
Stephen Peach
Eric & Kathy Pearce
Riva Pearson
Linda Pelletier
Julie Silberman & Dianne Perlmutter
Michael Morin & Amanda Peterson V
Anne Peterson
Mr. John Peterson
Patricia Cantor & Jeff Petrucelly
Tim Keith & William Petry
Lee & Meg Phillips
Francis & Christine Pimental
Mr. Christopher Pingree
Meredith & Steve Piotrow
Theresa Swanick & Patricia Piper

Nancy & Fred Pittenger
Mr. & Mrs. Richard Plusch
Kristen Pobatschnig
Diane Portnoy
Alix & Bob Pratt
Ronald Perrone & Diane Price
Prior Family
Ms. Alice Proctor L
Judy Holmes & James A. Progin
Gary & Sarah Punskey L
John Putnam
Quimby Family Foundation
R & R Woodworkers
Geoff & Betsy Race
Ms. Jay Rancourt
Kenneth & Jane Rancourt
David Publicover & Betsy Rand
Derek & Candy Rankin
Paul & Gwen Reiss
Eugene Resnick
George & Frances Rhoads
John & Jane Rhoads
Mike & Kate Ricci
Dody Coman & Katy Robbart
Laura Roberts
Dan & Amy Robins L
Seth Rockwell
Barbara Rockwell, Jr.
Marilyn Rodes
Amy Rogers L
Anne Rogers L
Chris Rollings
Alex Moot & Nancy Roosa
Dagmar von Schwerin & Thomas Rose
Sue Kalt & Josh Rosen
Carl & Jadwiga Rosenthal M
Mark & Susan Ross-Parent V
Cheryl & Jason Roth
David Roth
Ronald Routhier
Leigh Baker & Joshua Royte
Cara Rudio
Susan Ruka
Cindy & Brett Russell
Mr. & Mrs. Elbridge Russell L
Jessica Russell
Ron & Cathy Ryan
Jim Salmon
Rich & Deb Samia
Eric Sandquist L
Sandy Beach Trust L

Glenn & Sonnhilde Saunders
John Schiavi L
Ms. Elaine Schiripo
Meredythe Schober
Peter & Kathryn Schoch
Leslie & Warren Schomaker
Joshua Schonborn
Marten & Patricia Schoonman
Robert Bone & Elizabeth Schultz
Robin Schultz-Purves
Robert & Suzanne Scolamiero
Joe Scott
Tim & Sheila Scott
Wendy & Stephen Scribner
Ms. Peg Scully
Jennifer Seabury
Judith & David Seddon
Jeff Walker & Katherine Sexton
Russ & Dot Seybold
Robert W. Seymour
Mr. Robert Sgarzi
Nik Shah & Jessica Bennett Shah
Mary Shea
Tara & Daniel Shea
Mr. David Shedd
Dan & Rosemary Sheehan
Ned Sherburne
Rebecca Sherlock
Amy & Jonathan Sherwood
Diane & Thomas Shipp
Ms. Peg Silloway
Diana Simonds L
Moirra Simonds L
Eugene Simone L
Gerald Simone L
Tony & Jenny Simone L M
Ward & Nancy Simonton L
Dominique Sindayiganza
Earl & Theresa Sires
Jeffery Sires V
Mr. Nicholas Skinner
Ted Slader
Lyn Slanetz
Skip & Cathy Small
John & Kathy Smallcomb
Linda Smiley
Burgess & Barbara Smith V
David & Diane Smith
Mrs. Elenor C. Smith
Susan Beane & Peter Smith V
Mr. R. Blake Smith

Ron & Kim Smith
Janet & Richard Snyder
Carol & Ross Speer
Warren & Darlene Spence
Dan & Molly Sperduto
Spider Web Gardens LLC
Ellen Snyder & S. Srinivasan
Alec Stansell
Erin Wright & Howard Stanten
Wayne A. & Theresa L. Stanton
Charles & Joan Staples
Robert Stearns L
Bruce & Barbara Stelle M
Daniel & Stephanie Stepanauskas V
Kathy & Dick Stewart
Theo & Melanie Stibbons
Stonehurst Manor
Bill & Sally Stoops
Bob Streeter
David Sweet
Steve & Sally Swenson
Mark & Hampton Synnott
Bruce & Debra Taylor
Ms. Emily Taylor
Richard & Caroline Taylor
Joanne Taylor deKay
Linda & Bill Terry
Mary Thayer
The Nature Conservancy L
Brenda and Donnie Thibodeau
Ms. Kate Thompson
Charles & Alisa Thorne L
Muffy Thorne L
Virginia Thorne L
David & Judy Thurlow
Tin Mountain Conservation Center L
Suzanne Tolleson L
Town of Albany L
Town of Eaton L
Sasha & Jack Tracy V
Matt Trahan
Carly Trumann
Jim & Karen Umberger
Valley Resale
Robert Abbott & Tessa van der Werff
Kathleen Van Deursen
Dick & Shirl Van Dyne
Kathy & Dave Van Note M
Michael & Donna Veilleux
Veno's Specialty Foods & Meats

Alison Verran
Dennis & Johanna Vienneau
Paul & Melissa Vigue
David Vitale-Wolff
Brian Grennan & Fritz Von
Ulmer
Mr. Wyatt Wade (Old Blake
Farm)
Henry Barber & Sara Walbridge
Dr. Patricia Walker
Hilary Wallis
Andy Davis & Andrea Walsh
Mary Jane Walsh
Richard & Sally Ward
Shirley Ward
Helen & Jim Wasco
Norma Wassel
June McLeavey & Michael
Weeder
Tish Hanlon & Stephen
Weeder M
Dr. Harvey & Valerie Weener
Lou & Margaret Wells
Ms. Frances West
Ed & Carol Westervelt
George & Laurie Weston L
John Weston L
Ann & Tim Whalen L
Rev. John Cole & Dr. Polly
Wheat
Evelyn & Paul Whelton

Mr. Jeffrey White
Keith & Judy White
Will & Lisa White
Mr. Robert A. & Anne Whitten
John & Ann Wilcox
Ms. Jennifer Wiley
Joan Curcio & Henri Williams L
Roy Willits L
Thomas Willits L
Mr. Alan Wilson
Dawson Winch
Winona Camps
Marita & Bob Wiser
Gretchin Witman
Mr. Edward Wolcott
Mr. David Wood V M
Dawn & Jeff Wood
Marilyn Woodhouse
Mr. & Mrs. Byron Woodman, Jr.
Meg Worcester L
David & Jeanne Wright
Jesse Wright M
Marvin Wright
Courtney & James Wrigley V
Colin & Meredith Wroblewski
Alex Drummond & Theresa
Young V
Peter & Margaret Zack
Robert & Angela Zakon
Terry & Linda Zych

**IN HONOR OF/
IN MEMORY OF**
In Honor Of Martha M. Cobbs
Helen & Bruce Dixon
In Honor Of Larry Garland
Leane Page Garland
Marc Garland
**In Memory Of Howard
Huemmler**
Margery Huemmler
In Memory Of Holly Huhn
Peter Crane
In Honor Of Rick Jenkinson
Pamela Jenkinson
**In Memory Of Duncan
Kimball**
Mr. Christopher Baldwin
**In Memory Of Chet & Lydia
Lucy**
Bill & Sally Stoops
In Memory Of Lydia T. Lucy
Ann & Richard Bennett
Ed & Kathleen Bergeron
Mrs. Martha Cobbs
Barbara & David Douglass
Lori Jean Kinsey
Ms. Susan Nichols
Phil & Ann Ostroski
Gail F. Paine
Anne Rogers
Ms. Mary E. Shea

Michael & Donna Veilleux
**In Honor Of Jon & Diane
Marquis**
Ms. Meredythe J. Schober
In Honor Of Wrenna
Chris Chapman & Alison
Hale
In Honor Of Jesse Wright
Theresa Bernhardt
Trish Mansur & Elaine
DiRusso

**ART CELEBRATES PLACE
IN-KIND CONTRIBUTORS**

Mabel Albert
Appalachian Mountain Club
Axis Dance Co.
Deb Ayers
Scott Barber
Susan Beane
Natalie Beittel
Ann Bennett
Peter Blue
Brookford Farm
Annie Burke
Burnt Meadow Blueberries
Ailie Byers
Katy Clark
Marnie Cobbs
Mike Dana
Earle Family Farm
Mary Edes

Fish Nerds Guide Service
Flatbread Pizza
Foothills Farm Alliance
Gay Freeborn
Frith Farm
Fryeburg Academy
Lucy Gatchell
Grandy Oats
Linda Gray
Green Thumb Farm
Maria Gross
Herb Hollingsworth
Lindsay Johnston
Allie Kaplan-Thompson
Leura Hill Eastman Performing
Arts Center
Melanie Barash Levitt
Jeanne Limmer
Maine Medicinals
Tricia Mattox-Larson
Milan McNall
Meghan Moody
Molly Mundy
Naylen Farm
Old Village Bakery
Patch Farm
Pied-a-terre Farm
Kristen Pobatschnig
Jay Rancourt
Saco River Brewing
Saco River Farm

Sap Hound Maple Company
Shaw's Supermarket
Sherman Farm
South Paw Farm
Georgia Stafford
Sunnyfield Brick Oven Bakery
Tamworth Mushroom Company
The Local Grocer
Purlin Twigg-Smith
Virginia Ward
Aurora Winkler

**FIELDS ON THE SACO
IN-KIND CONTRIBUTORS**

Anne Skidmore Photography
Bryant Alden
BAM Hospitality
Michael Beers
Ann Bennett
Peter & Emily Benson
Ailie Byers
Cormack Construction
Sarah & Jake Davis
Andrew Drummond
Dutch Bloemen Winkel
(Carrie Scribner)
Earle Family Farm
Good Vibes Coffee Roasters
Granite Backcountry Alliance
Linda Gray
Green Thumb Farms
Hardy Farm

HEB Engineers
 Hosac Farm
 Jeff Fournier
 Jason Huter
 Liz Jackson
 Paula Jones
 Nicholas Kane
 Erik Koeppel
 Leone McDonnell & Roberts PA
 Julie Levine
 Libby's Bistro & SAALT Pub
 Little Field Farm
 Lucy Hardware
 Maine Grains
 Tricia Mattox-Larson
 Mill Brook Farm
 Monhegan Wellness (Tobey Levine)
 Moonset Farm (Jackie Gardner)
 Mountain Heartbeat Farm
 Naylen Farm
 New Day Farm
 Old Wells Farm
 The Oxford House Inn
 Patch Farm
 Pietree Orchard
 Pork Hill Farm
 Portland Schooner Company
 Range View Farm
 Red Gables Farm
 Susan Ross-Parent
 Sap House Meadery
 Richard Schmitt
 Severance Lodge Club
 Ski The Whites
 Lisa Somerville
 Jonathan & Natalie Spak
 Spider Web Gardens
 Teresa Stearns
 Table and Tonic
 The Tarberry Company
 Thompson House Eatery
 Sasha Tracy
 The Trailing Yew
 Vintage Baking Company
 Weston's Farm
 White Mountain Cider Company
 White Mountain Puzzles
 Wildcat Inn & Tavern
 WMWV 93.5
 Wotton Farm

GRANTS & SPECIAL PROGRAM SUPPORT
Advancing Local Agriculture
 Anonymous
 Anonymous family foundation
 Maine Farmland Trust
 State of NH Department of Agriculture
 Thompson House Eatery
 USDA – Rural Business Development Grant
Aquifer Protection & Water Quality Work
 NH Department of Environmental Services – Local Source Water Protection Grant
 Virginia Wellington Cabot Foundation
General Support
 Anonymous family foundations (2)
 Land Trust Alliance
 Maine Community Foundation
 New Hampshire Charitable Foundation donor advised funds:
Anonymous family funds (2)
Eagle's Rest Fund
Kigme Fund
Kineo Fund
Lakes Region Environmental Fund
Marshall Family Fund
Melinda Richmond Fund
Richard A. Ware Family Fund
Stanton and Elisabeth Davis Fund
 Newsmen's Own Foundation
 PayPal Giving Fund
Stewardship
 Maine Department of Inland Fisheries & Wildlife
 Natural Resources Conservation Service - USDA Environmental Quality Incentives Program (EQIP) Grant
 New Hampshire Land & Community Heritage Investment Program (LCHIP)
 Redstone Properties, Inc. (John Schiavi)

Matching Gifts
 GE Foundation
 The Horizon Foundation for New Jersey
 Virginia Wellington Cabot Foundation
Dundee Project
 Martha W. Chandler
 Kimberly Siebert & Mr. Hugh MacPhail
 Joan E. MacPhail Rev Trust of 2008
Lucy Brook Farm
 Anonymous
 Anonymous foundation
 Gaudette Family
Pine Hill Community Forest
 George & Laurie Weston
Secure the Ledges Initiative
 Access Fund
 Mr. Rob Adair
 Anonymous foundation
 Sasha & Jack Tracy
Ware Preserve
 Mr. Rob Adair
 Anonymous foundation
 Rick & Pennie Boyle
World Fellowship Center Project
 Ingrid & Mark Albee
 Audubon Society of New Hampshire
 Richard Brown
 W. Robert Abbot & Claire M. Cifaloglio
 Ms. Carol S. Coonrod
 Tara Taylor & T.O. Carrier
 Dave & Noreen Downs
 Margaret & Charles Felton
 Barbara Drake & John Gotjen
 Pete Lewis & Joanne Kelly
 Elizabeth Loughran
 Winston Montgomery & Peggy Nelson
 New Hampshire Charitable Foundation
 Ms. Alicia Ogawa
 Priscilla Ortiz
 Ronald Perrone & Diane Price
 Barbara Rockwell, Jr.
 Skip & Cathy Small
 Bruce & Barbara Stelle
 Andy Davis & Andrea Walsh
 Norma Wassel

BUSINESS PARTNERS

A special THANK YOU to these business partners! Please support them, because when you do, they're supporting us!

CONTRIBUTE TO PLACE & SACO RIVER LEVEL



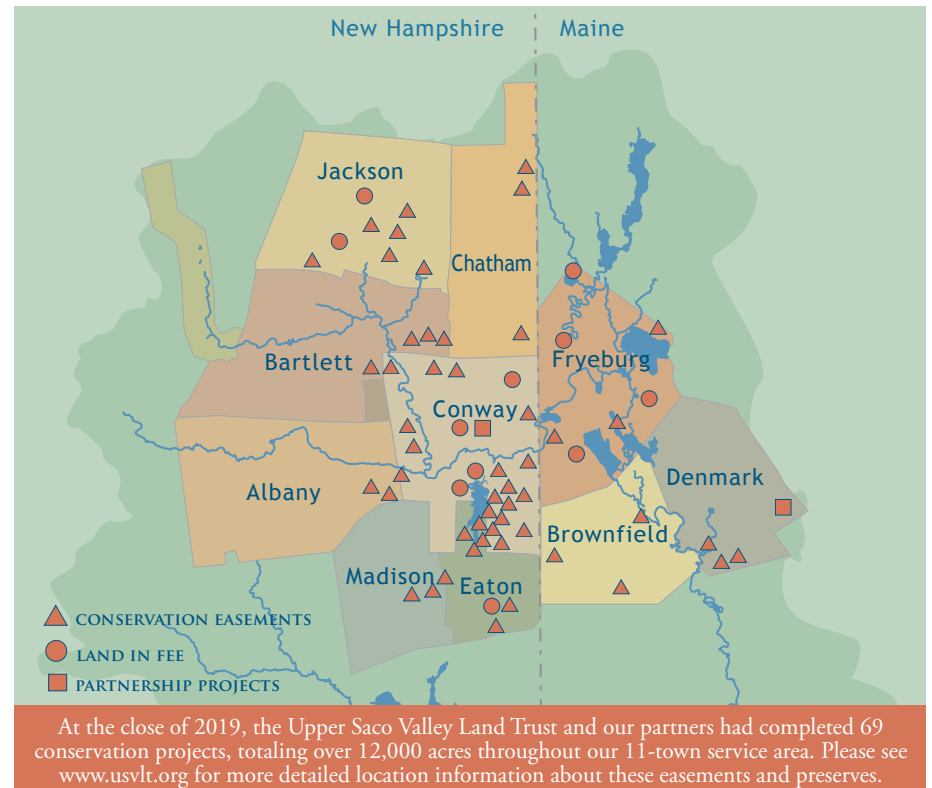
SWIFT RIVER LEVEL

Jim Doucette Real Estate
 The Tarberry Company
 The Valley Originals
 White Birch Books
 White Mountain Oil & Propane
 White Mountain Puzzles
 Wyonegonic Camps

ELLIS RIVER LEVEL

The Buttonwood Inn
 Dutch Bloemen Winkel
 Eastern Mountain Sports
 Edge of Maine Gallery
 Emerald Tree Experts
 Gamwell Caputo Kelsch & Co
 Good Vibes Coffee Roasters
 GrandyOats

Hastings Malia P.A.
 J-Town Deli & Country Store
 Minuteman Press
 Settlers Crossing
 Spice & Grain
 Tamarack Construction
 The Local Grocer
 Tuckerman Brewing Company
 Vintage Frameworks



FINANCIAL REPORT

(Year Ended December 31, 2019 — Unaudited)

COMBINED STATEMENT OF ACTIVITIES

	Unrestricted	Temporarily Restricted	Total
REVENUE:			
Membership Contributions	\$ 90,647	\$ -	\$ 90,647
Grants and Donations	87,975	615,105	703,080
Other	47,619	-	47,619
Net Assets Released from Restrictions	148,861	(148,861)	-
Total Operating Revenue	\$375,102	\$ 466,244	\$ 841,346
EXPENSES:			
Program Services:			
Land Protection & Easement Acquisition	\$ 193,577	\$ -	\$ 193,577
Land Stewardship	74,767	-	74,767
Total Program Services	268,344	-	268,344
Management and General	83,994	-	83,994
Fundraising	12,886	-	12,886
Total Operating Expenses	365,223	-	365,223
Change in Net Assets	\$ 9,879	\$ 466,244	\$476,123

COMBINED STATEMENT OF FINANCIAL POSITION

	Unrestricted	Temporarily Restricted	Permanently Restricted	Total
ASSETS:				
Cash, Unrestricted	\$128,342	\$ -	\$ -	\$ 128,342
Cash, Restricted	-	639,730	-	639,730
Pledges Receivable	-	-	-	-
Prepaid Expenses	6,450	-	-	6,450
Beneficial Interest Held by Others	-	-	222,944	222,944
Property & Equipment, net	4,223	-	-	4,223
Land & Conservation Easements	-	-	1,950,337	1,950,337
Total Assets	\$139,015	\$ 639,730	\$2,173,281	\$2,952,026
LIABILITIES AND NET ASSETS:				
Accrued Expenses	\$21,668	\$ -	\$ -	\$ 21,668
Net Assets	117,347	639,730	2,173,281	2,930,358
Total Liabilities and Net Assets	\$139,015	\$ 639,730	\$2,173,281	\$2,952,026

Unrestricted funds may be used for day to day operations. Temporarily restricted funds are grants and donations for a specific project or purpose to be used in the future. Permanently restricted assets include land, easements and stewardship endowment.



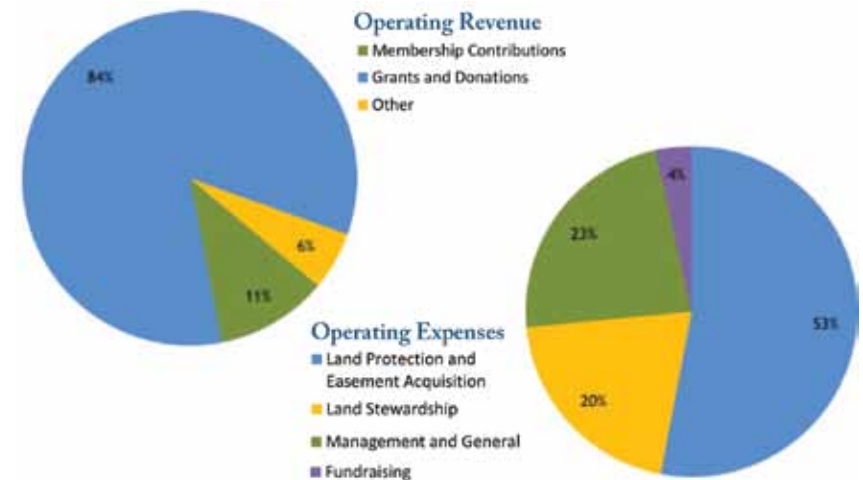
The Light in Between/Purlin Twigg-Smith

Financially, as well as operationally, 2019 was another strong year for the Upper Saco Valley Land Trust. When reviewing the organization's financial results, it is helpful to separate activities into two categories, operations (rent, phone, salaries, etc.) and special one-time projects. In 2019, the day-to-day operations generated an excess of revenues over expenses of nearly \$10,000, which compared favorably to the \$7,000 that was budgeted. Further, in 2019, one-time projects represented a net increase in Land Trust assets of over \$400,000. The major portion of this increase was a generous donation of land, supplemented by numerous cash grants relating to current and future land-protection projects. The success of 2019 has given USVLT a solid foundation for growth into its 20th year, as we take on ambitious new land protection projects and increase our stewardship and staff capacity.

Sources of financial support are member contributions, grants, outreach activities, business partnerships, and events such as Art Celebrates Place and Fields on the Saco. As we follow our 2017 Strategic Plan to its fruition, our land holdings, stewardship responsibilities, operational capacity, and outreach programming are all expanding. Going forward, the Land Trust will also be increasing its financial reserves commensurate with this growth. These reserves will:

- Help ensure conservation easement terms are satisfied and other stewardship responsibilities are met.
- Attract and retain qualified staff.
- Allow USVLT to engage in larger and more complicated land protection projects.

For the Land Trust to carry out its mission, the support of the local community is essential. The organization's continuing ability to preserve land for community benefit is only made possible with your support. Thank you.



*The financials reported here include income and expenses relating both to our operating budget, as well as campaigns run for special projects or specific land projects. While membership support accounts for 11% of total income in 2019, it accounts for an impressive 42% of "operating income" that is not tied to a specific land project. Thank you.