

# Pine Hill Community Forest Expansion



## Expanding on a treasured community asset.

### Overview

Imagine a vast tract of land in the middle of one of northern New Hampshire's largest (and busiest) towns, with mature woods nearly surrounding the campus of the regional high school, a deep fern-covered ravine that spills into a 125-acre wetland complex, and a beloved riverside trail used by runners, bikers and dog-walkers. It's already there, hidden in plain sight – the 460-acre Pine Hill Community Forest in Conway. The original purchase was a 2018 project of the Upper Saco Valley Land Trust. We now have an opportunity to expand the forest's size by 30% and to build new trails and parking areas for residents and visitors alike.

The additional land, at 134 acres, is quite large itself. It also includes more than 1,600 feet of frontage on the White Mountain Highway – completing the mile-long "green corridor" between Conway Village and North Conway's shopping outlets. Situated in the heart of the Valley, expansion of the Forest has great significance for a region under high development pressure.

The potential acquisition is forested and undeveloped, and it fills in a missing "puzzle piece" of land on the existing Community Forest. It will enhance habitat for plant and animal species, while widening opportunities for outdoor education and recreation.

## Recreation & Trails

The property already boasts more than a mile of multi-use trails, accessible from behind Kennett High School and Conway's Smith-Eastman Landing park. A branch of the Conway "Rec Path" follows the Saco River for over 3,300 feet, mountain bike trails are scattered throughout, and a main snowmobile route (Corridor 19A) also crosses through the property. Kennett High School's cross-country running team and mountain bike team already use many of the trails onsite, while area residents – including those at two nearby mobile home communities – use the trails daily.

The proposed acquisition provides for the establishment of two new trailheads and associated parking areas, linking trails that provide access between Eagles Way and White Mountain Highway, a "sidewalk trail" along Route 16 that fulfills critical pedestrian needs, and new trails to the summit of Pine Hill itself, offering views towards both Mount Chocorua and the Presidential Range. (See associated map.)

## Community-Driven Management

The Pine Hill Community Forest is already managed to balance ecological and recreational values by a multi-stakeholder group. The Pine Hill Management Committee include administrators of the Conway School District, local environmental educators at Tin Mountain Conservation Center, snowmobilers at the Mountain Meadow Riders, representatives of the Mount Washington Valley Trails Association, and also members of the Conway Selectboard and Conservation Commission. These stakeholders review trails plans, maintenance budgets, and public access issues on behalf of USVLT.

## Please join us

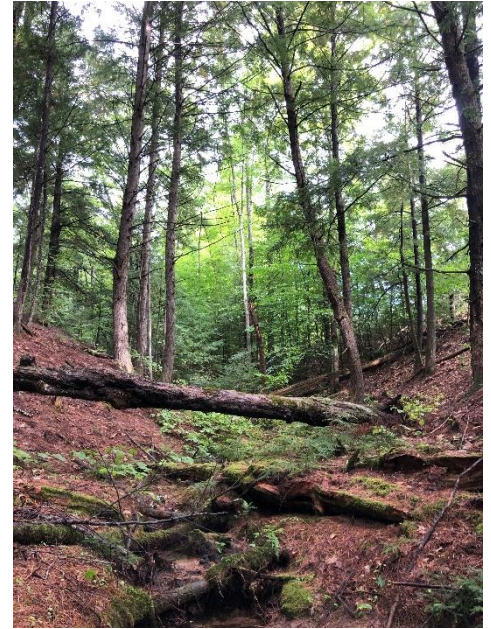
Your generous financial support will add to a beloved community resource in the heart of Conway. Expansion of the Pine Hill Community Forest will provide healthy outdoor experiences for students, residents, and visitors alike, all while safeguarding clean air, water, and cherished open space. Thank you!

### FOR MORE INFORMATION:

William B. Abbott, Executive Director  
Upper Saco Valley Land Trust  
603.662.0008 ext. 1  
[wabbott@usvlt.org](mailto:wabbott@usvlt.org)

## Economic Benefits

In addition to the economic benefits linked to the recreational opportunities onsite, the Pine Hill Community Forest has an active timber program which will produce high-value forest products and a source of revenue for the Community Forest in perpetuity. The proceeds of the timber program can also be re-invested in other community conservation priorities. The logs, supplied to local mills, will bolster forest-products sector jobs, with additional revenues for Conway from timber yield tax.



## History

Located on traditional ancestral lands of the Abenaki people, the Pine Hill property likely reached its height of fame in the late 1800s, when it was the site of the White Mountain Mineral Spring Company and the associated Victorian-style Nash House, which served as both a bottling plant and a country inn for "rusticators" and travelers. The long-abandoned Nash House was burned around 1970 as part of a fire department training exercise. The nearby (and now restored) Mineral Spring House – just upslope from the western entrance of Kennett High School – still covers the spring's source

