

# A CAMPAIGN TO CHART OUR NEXT 20 YEARS OF GROWTH

# 20 YEARS & ONWARD

PRESERVING LAND FOR LIFE

The Upper Saco Valley Land Trust celebrated its 20th anniversary in 2020, having already conserved over 12,000 acres of habitat, working forest and prime farmland. More than 75 projects have been completed, preserving 16 miles of frontage along the Saco River and its tributaries. The process has engaged hundreds of landowners and supporters, coalescing around a bold, optimistic vision of the future.

## Help us chart our next 20 years of community-based conservation with:

1. A Land Action Fund for exemplary protection projects
2. A Capital Reserve Fund to sustain future stewardship
3. An Agricultural Fund to conserve farmland and advocate for farmers and sustainability

Our \$5.97 million goal is ambitious—and achievable. More than \$3 million will come from federal, state, and local grants earmarked for specific land protection projects. To match these grants, \$2.9 million is needed from our community of supporters.

## And, we have exciting news:

As of May 1st, **80%** of the \$6 million has already been raised or pledged for this undertaking.

Please help us over the finish line.

# CAMPAIGN FRAMEWORK

✓ Land Action Fund for Exemplary Projects =	\$4,370,000
✓ Capital Reserve =	\$1,000,000
✓ Farmland Conservation & Advocacy =	\$ 600,000
Total Cumulative Need =	\$5,970,000
Less anticipated government grants =	<u>(\$3,070,000)</u>
Total Need (from community of supporters) =	\$2,900,000

**LAND ACTION FUND** – At our doorstep are two exemplary projects that will be completed with the Land Action Fund:

- **The Dundee Community Forest** which spans the town line between Jackson and Bartlett, and
- **The Pine Hill Community Forest Expansion** project in Conway (the first phase was completed in 2018).

Together, the anticipated cost for these two projects is \$4,265,000 and will utilize most of the Land Action Fund.

**CAPITAL RESERVE FUND** – Financial stability is crucial to USVLT’s conservation work, and the Capital Reserve Fund will help sustain our stewardship obligations in the future. The fund will offset operational costs by allowing one full-time stewardship staff person to be paid from its earnings (currently subsidized through annual membership donations).

**FARMLAND FUND** – The Farmland Fund will match government grants to conserve agricultural properties and support advocacy efforts on behalf of local family-scale farms. USVLT has already conserved Weston’s Rivercroft Farm, Hussey’s Cross Farm, the Amos Merrill Homestead Farm, the Earle Family Farm, and three different farms owned by branches of the Lucy family. Despite these victories, less than 10% of farmland in the Mount Washington Valley has been protected.

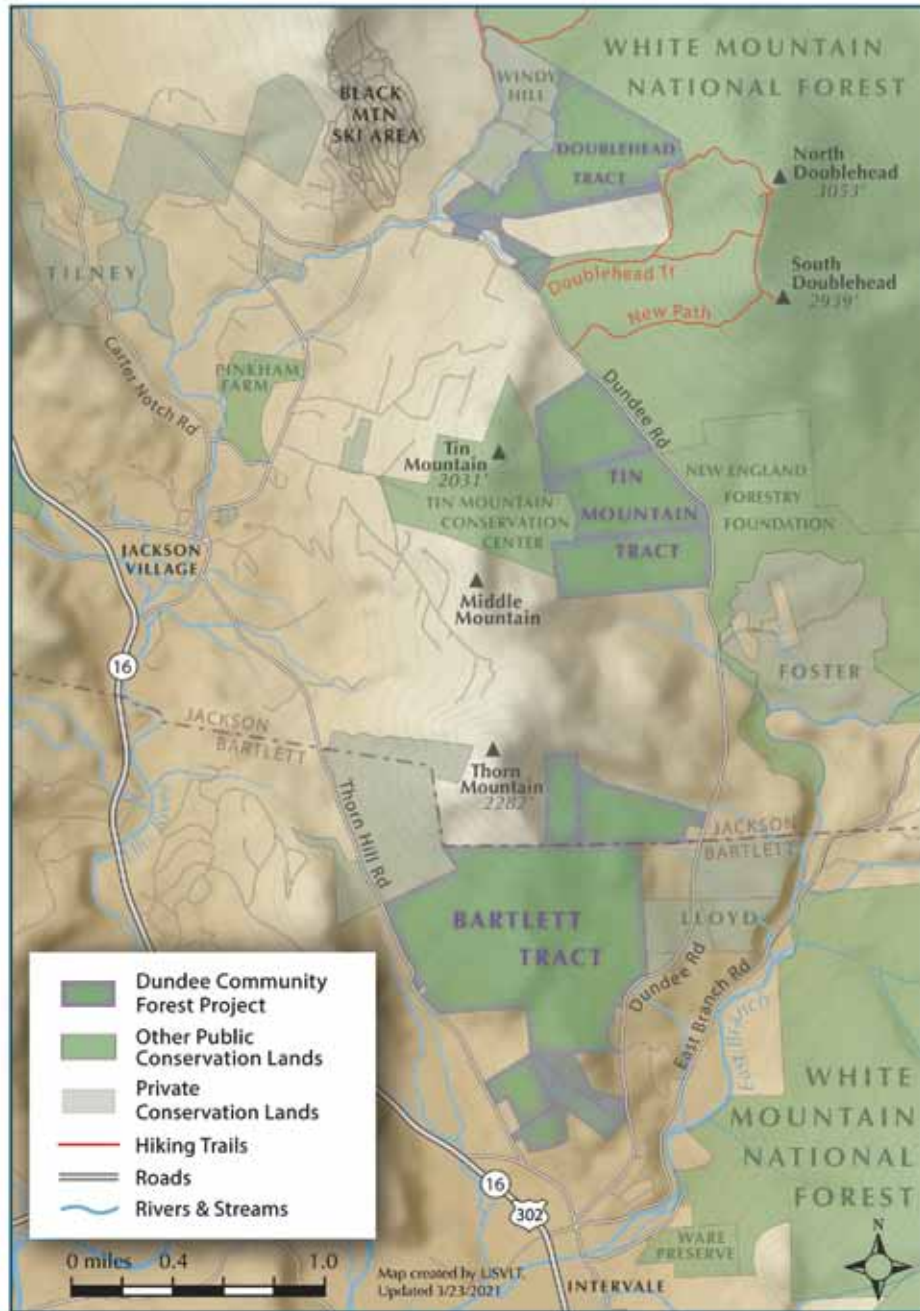


PO Box 2233, Conway NH 03818  
(603) 662-0008 • info@usvlt.org • www.usvlt.org

This photo and the image of summertime hikers (inside) are in the vicinity of the Dundee Forest, shot on location by Jerry Monkman, Ecophotography, and courtesy of the Trust for Public Land. The Pine Hill showstoe photo is by Meghan Moody.

## DUNDEE COMMUNITY FOREST

JACKSON/BARTLETT, NH



# DUNDEE COMMUNITY FOREST

UNPRECEDENTED TIMES  
UNPRECEDENTED OPPORTUNITY

Nearly 1,200 acres of forest rich with biodiversity, pristine streams, and peaks offering stunning views...the future Dundee Community Forest. In partnership with The Trust for Public Land, USVLT aims to conserve one of the largest unprotected landholdings in our 11-town service area, ranging from Jackson down into Lower Bartlett.

Consisting of 16 separate parcels, the forest has been assembled and stewarded by a local family over the last 60 years. These remarkable lands will be managed by USVLT for sustainable forestry, recreation, and the protection of rare natural ecosystems. In partnership with stakeholders in the towns of Bartlett and Jackson, future stewardship decisions will be made with community input.

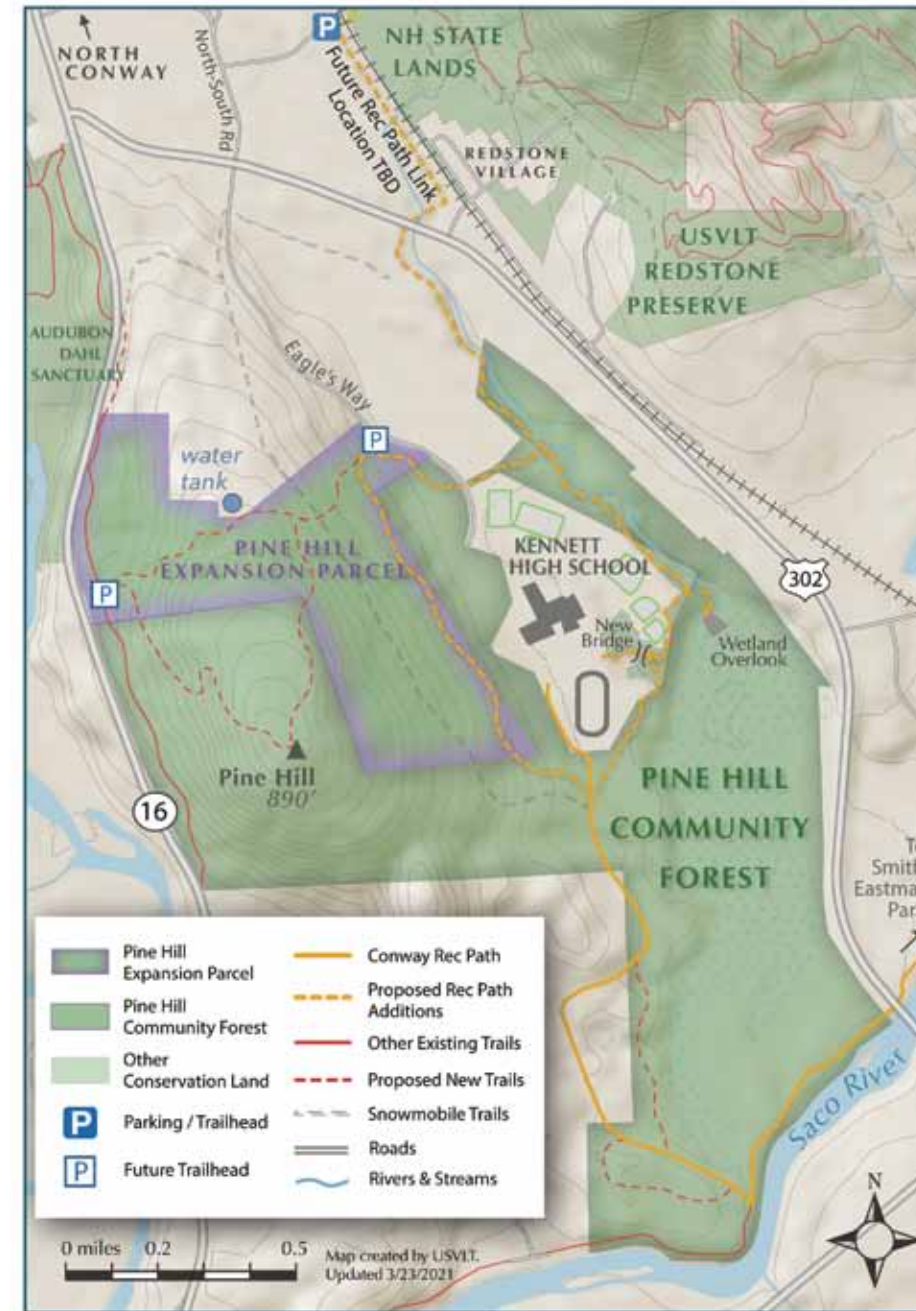
The wide range of environmental, recreational and economic benefits includes:

- Safeguarding over 150 acres of old-growth habitat that supports bear, moose, bobcat, pine marten, and other wildlife
- Preserving over 3.5 miles of headwater streams
- Permanently protecting several rare plant species known from the site
- Enhancing the adjacent White Mountain National Forest by buffering the Forest from encroachment
- Creating opportunities for trails for birders, hikers, skiers and mountain bikers alike
- Providing income from timber sales, to be used for maintenance, long-range planning, and future conservation projects.



## PINE HILL COMMUNITY FOREST EXPANSION

CONWAY, NH



# PINE HILL COMMUNITY FOREST EXPANSION

EXPANDING ON A TREASURED COMMUNITY ASSET

Imagine a vast tract of land in the middle of one of northern New Hampshire's busiest towns, with mature woods nearly surrounding the campus of the regional high school, a deep fern-covered ravine spilling into a 125-acre wetland complex, and a beloved riverside trail used by runners, bikers and dog-walkers. It's already there, hidden in plain sight – the 460-acre Pine Hill Community Forest in Conway.

The original purchase was completed in 2018. There is now an opportunity to expand the forest's size by 30% and to build new trails and parking access for residents and visitors alike.

The parcel also includes more than 1,600 feet of frontage on Route 16, completing the mile-long "green corridor" between Conway Village and North Conway's shopping outlets.

The long list of environmental, recreational and economic benefits includes:

- Permanently protecting the Mineral Spring and Cold Brook wetlands
- Enhancing environmental education at Kennett High School
- Completing a new branch of the multi-use Conway Rec Path
- Creating two new parking areas and trailheads for better access
- Building new trails to the top of Pine Hill and along the Cold Brook ravine
- Laying out new trails for mountain bikers, cross-country running teams, and the general public
- Providing a reliable through-route for the Corridor 19A Snowmobile Trail
- Resurfacing the existing riverside trail for all-ability users
- Garnering income from timber sales, to be used for maintenance, long-range planning, and future conservation projects.

